

# Portsmouth Covid-19 Intelligence Summary

12.03.21

# Overview

## 1. Infections

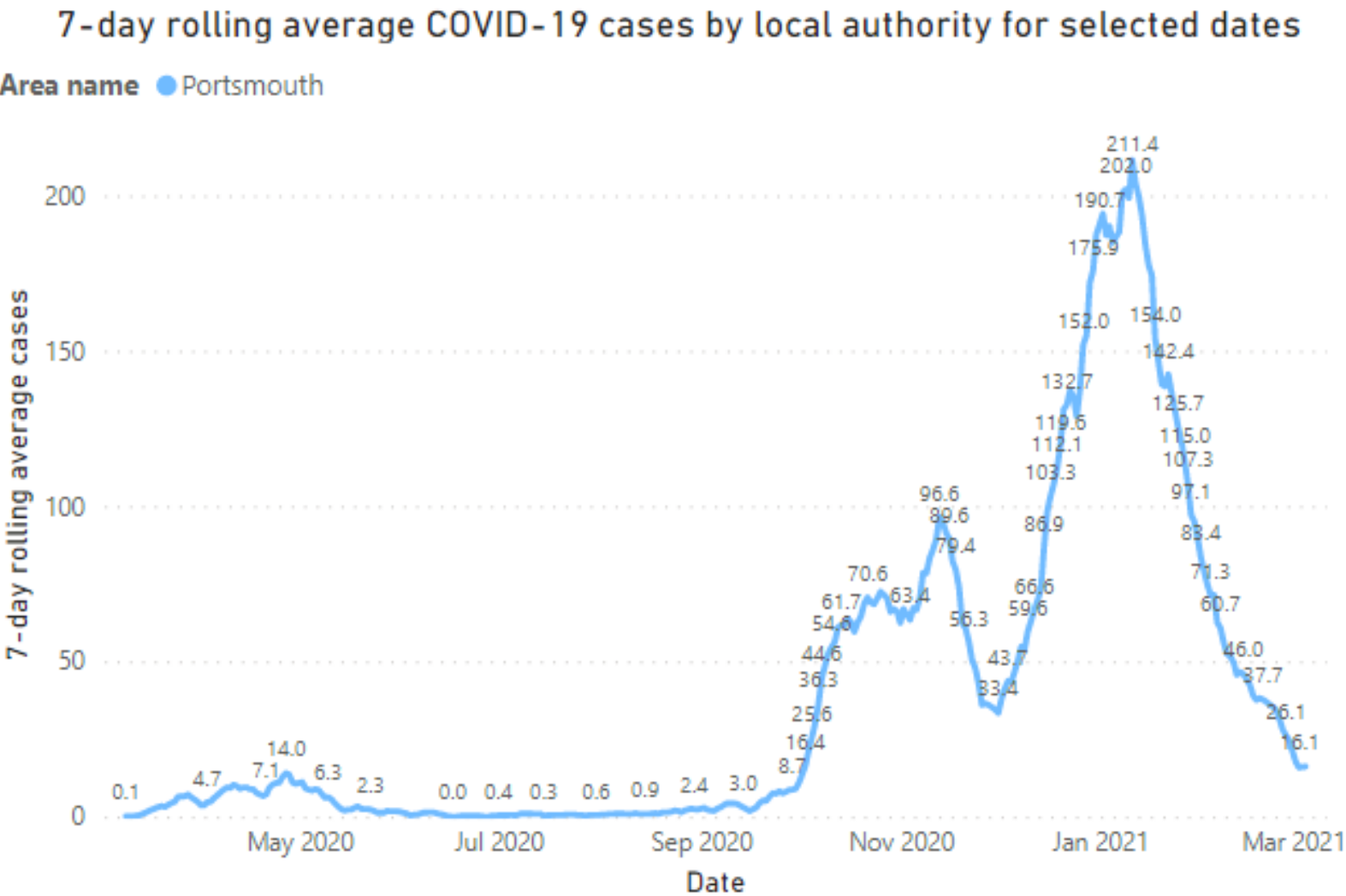
- 1.1 7-day rolling average Covid-19 cases in Portsmouth
- 1.2 H10W infections by UTLA (spark lines)
- 1.3 Weekly rates per 100,000 and comparators
- 1.4 Age specific rates for Portsmouth

## 2. Deaths

- 2.1 Covid-19 deaths in Portsmouth
- 2.2 Extra deaths occurring in 2020 in Portsmouth compared to average of corresponding week by week of death

# 1.1 Infections – Portsmouth Covid-19 cases

7-day rolling average Covid-19 cases in Portsmouth, 30 January 2020 to 05 March 2021



There have been 125 new infections in Portsmouth recorded (Pillar 1 and Pillar 2) in the past week. Portsmouth has now have 13,920 people with at least one positive Covid-19 test result (either lab-confirmed or lateral flow device)

The chart shows the epidemiological curve of people with at least one positive Covid-19 test result, either lab-reported or lateral flow device.

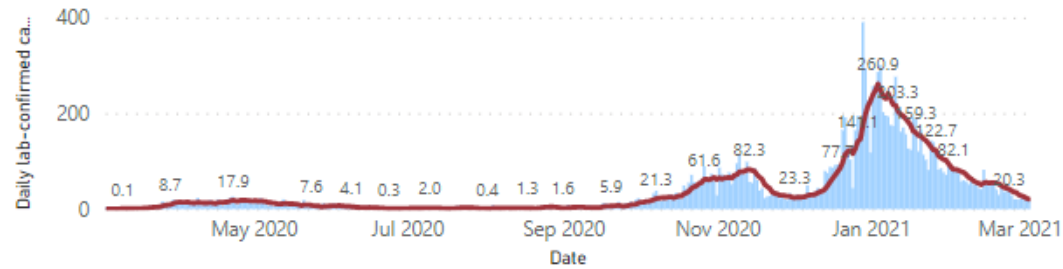
Data is from <https://coronavirus.data.gov.uk/>, data as of 11.03.21

Case numbers are subject to revisions, especially most recent numbers.

# 1.2 Infections – spark lines for HIOW UTLAs

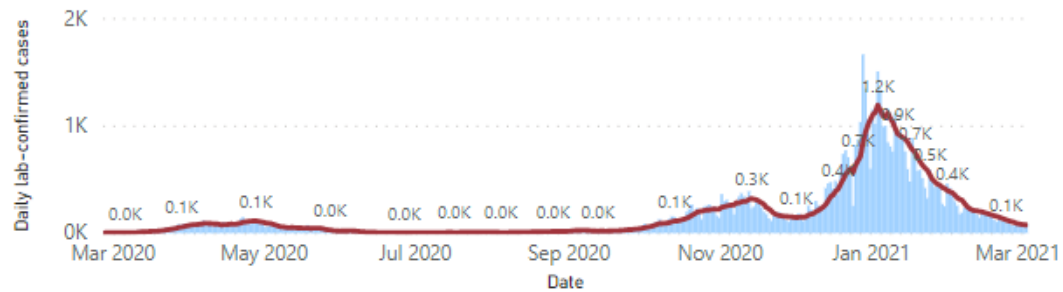
Number of COVID-19 cases per day and 7-day rolling average in Southampton for selected dates

Key: ● Daily lab-confirmed cases ● GOV Rolling 7 day average



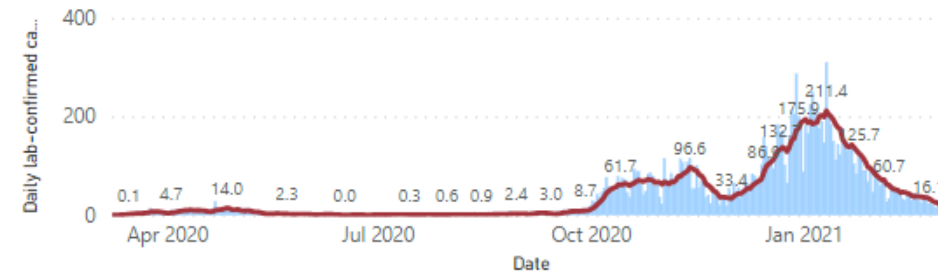
Number of COVID-19 cases per day and 7-day rolling average in Hampshire for selected dates

Key: ● Daily lab-confirmed cases ● GOV Rolling 7 day average



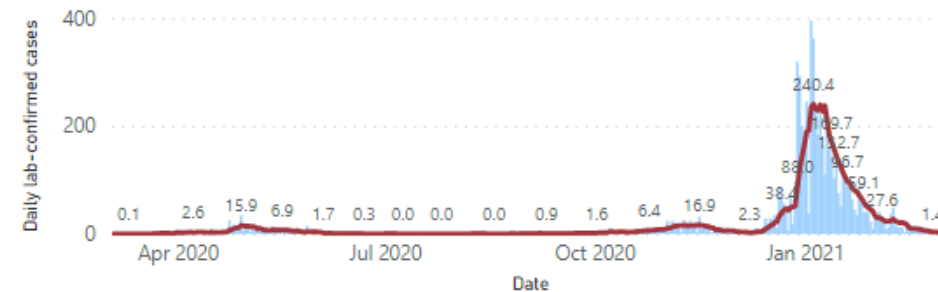
Number of COVID-19 cases per day and 7-day rolling average in Portsmouth for selected dates

Key: ● Daily lab-confirmed cases ● GOV Rolling 7 day average



Number of COVID-19 cases per day and 7-day rolling average in Isle of Wight for selected dates

Key: ● Daily lab-confirmed cases ● GOV Rolling 7 day average



Portsmouth:

- 13,920 total cases
- 125 new cases in last 7 days\*

Southampton

- 13,829 total cases
- 147 new cases in last 7 days\*

Hampshire

- 61,735 total cases
- 498 new cases in last 7 days\*

Isle of Wight:

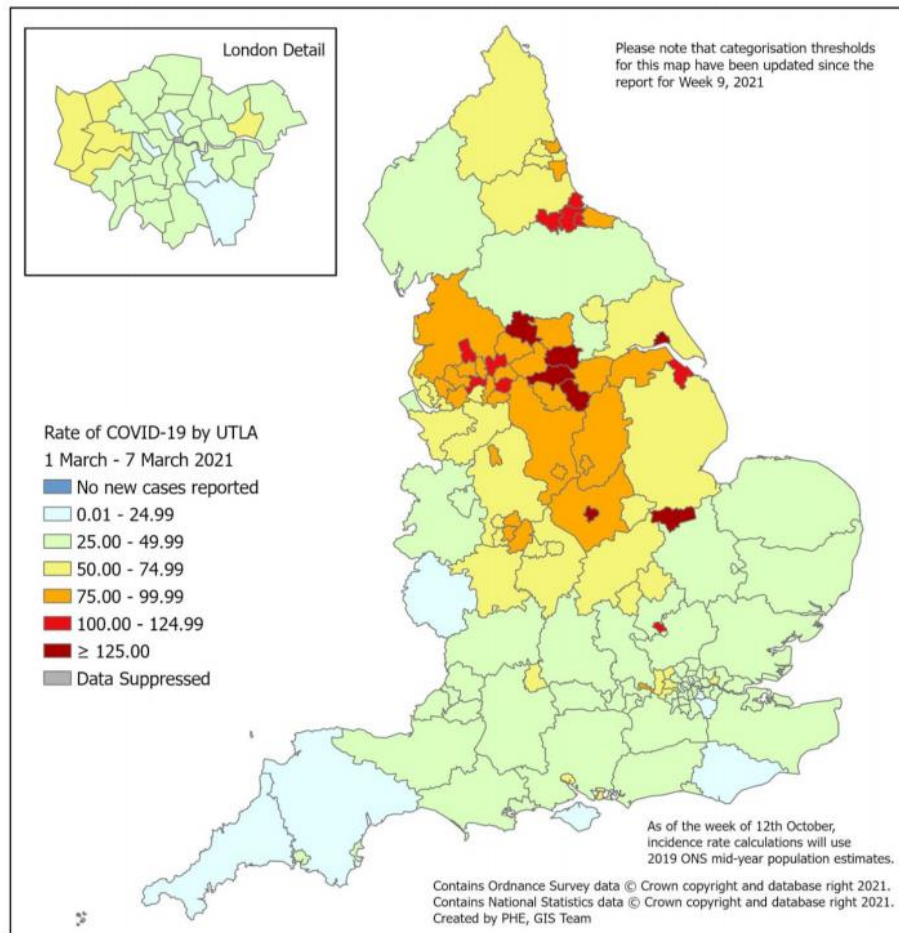
- 6,669 total cases
- 13 new cases in last 7 days\*

The chart shows the epidemiological curve of new cases (daily and 7 day average) for the Upper Tier Local Authorities in HIOW Data is from <https://coronavirus.data.gov.uk/>, data as of 11.03.21

\*7-day period ending 06.03.21, as reported on 11.03.21

Case numbers are subject to revisions, especially most recent numbers. Cases since 01.09.20 were revised on 16.11.20 to use a new methodology for assigning cases to local authorities.

# 1.3 Weekly rates of Covid-19 cases



Weekly rate of COVID-19 cases per 100,000 population tested under Pillar 1 and 2, by upper-tier local authority, England (box shows enlarged maps of London area).

Based on week 9 (01 March to 07 March 2021). Available at:  
<https://www.gov.uk/government/statistics/national-flu-and-covid-19-surveillance-reports>

**Note:** the colour ramp / scale for this map was altered as of 01 March 2021. This means that colours cannot be compared to previous versions of this map.

| UTLA name         | Rate per 100,000 last 7 days | % change in last 7 days |
|-------------------|------------------------------|-------------------------|
| Isle of Wight     | 9.2                          | -45.8                   |
| Hampshire         | 36.0                         | -31.5                   |
| Medway            | 37.3                         | -41.6                   |
| <b>South East</b> | <b>37.3</b>                  | <b>-34.4</b>            |
| Portsmouth        | 58.2                         | -31.7                   |
| Southampton       | 58.2                         | -40.2                   |
| <b>England</b>    | <b>60.3</b>                  | <b>-30.3</b>            |
| Slough            | 84.3                         | -29.6                   |
| Rotherham         | 151.8                        | +2                      |

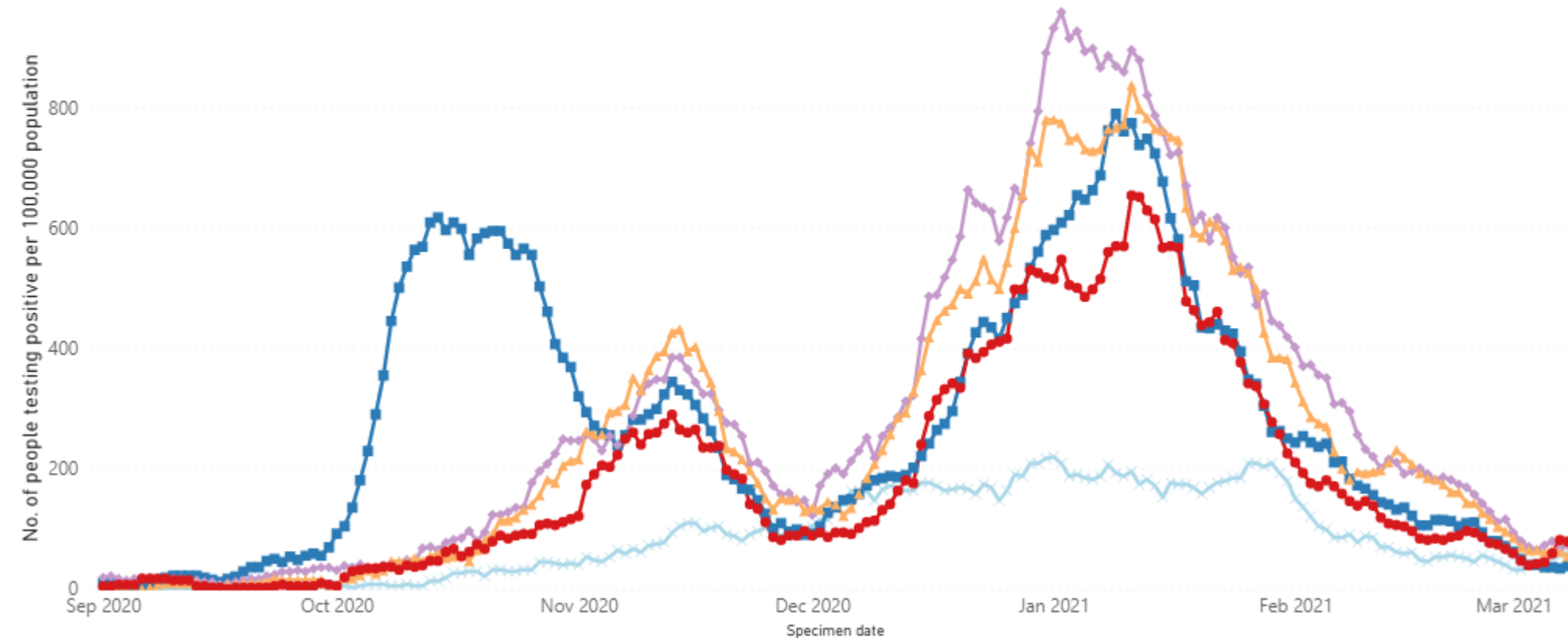
Rate of COVID-19 per 100,000 per week in most recent 7 day period with complete data (28 February to 06 March 2021).

Available at: <https://coronavirus.data.gov.uk/cases> (Accessed 11.03.21)

# 1.4 Weekly rates of Covid-19 by age bands

No. of people testing positive for Covid-19 in the rolling seven-day period per 100,000 population; by age group, Portsmouth residents

0-14 years 15-29 years 30-44 years 45-59 years 60 years and over



This chart shows the rate per 100,000 of cases in the last 7 days, split into broad age bands

Rates are now highest among 60+ year olds, closely followed by 30-44 year olds. The rate for all other age-bands is stabilising.

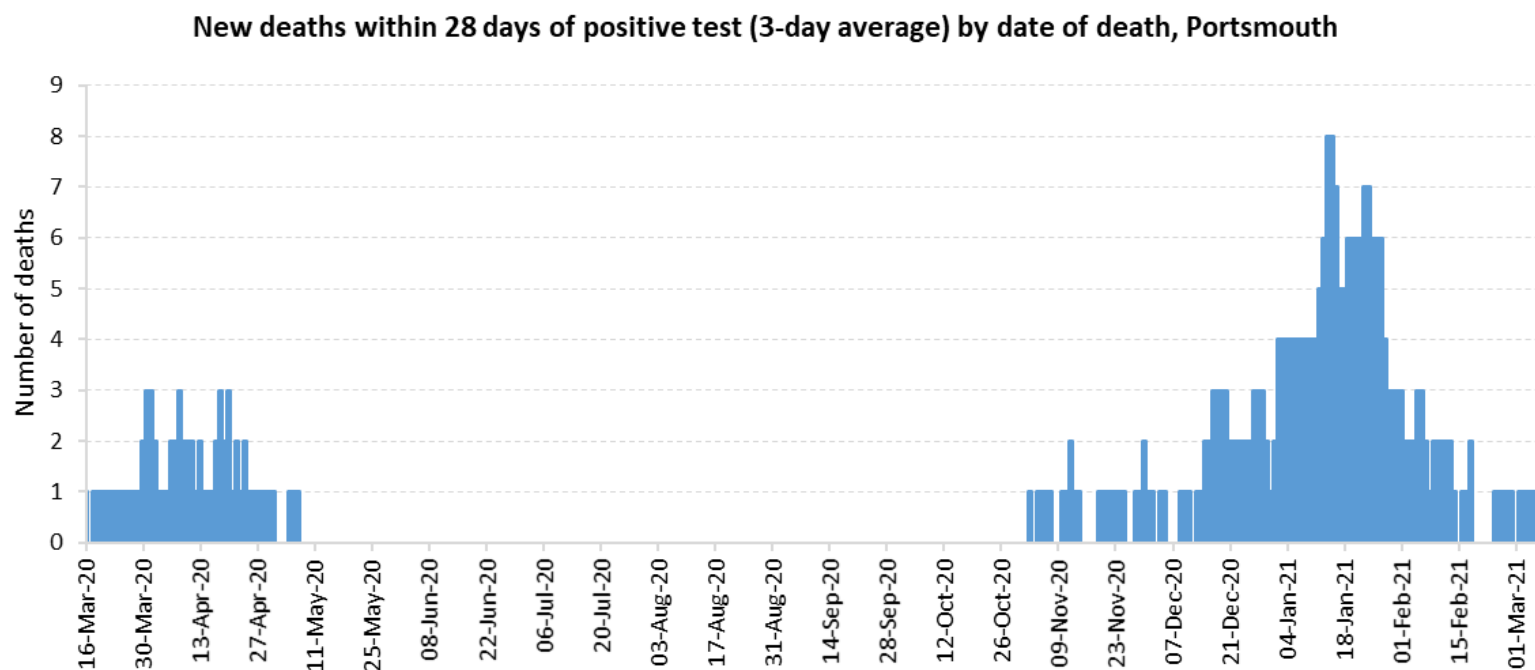
The chart shows the rolling 7 day average rate of people testing positive for Covid-19 by age group for Portsmouth residents.

Case data is from <https://coronavirus.data.gov.uk/>, data as of 11.03.21. Rates are calculated using the ONS 2019 mid-year population estimates.

Case numbers are subject to revisions, especially most recent numbers. Cases since 01.09.20 were revised on 16.11.20 to use a new methodology for assigning cases to local authorities.

# 2.1 Deaths

## New deaths within 28 days of positive test (3-day average) in Portsmouth



Data source: <https://coronavirus.data.gov.uk/>

There have been 272 Covid-19 related deaths within 28 days of positive test recorded in Portsmouth since the end of October.

There have been 6 deaths in the last 7 days, and 352 deaths in total.

The chart shows the number of deaths (3-day average rounded to the nearest whole number) of people who had a positive test result for Covid-19 and died within 28 days of the first positive test in Portsmouth.

Data for the period ending 5 days before 11.03.21 (the date when the website was last updated with data) is incomplete and subject to change.

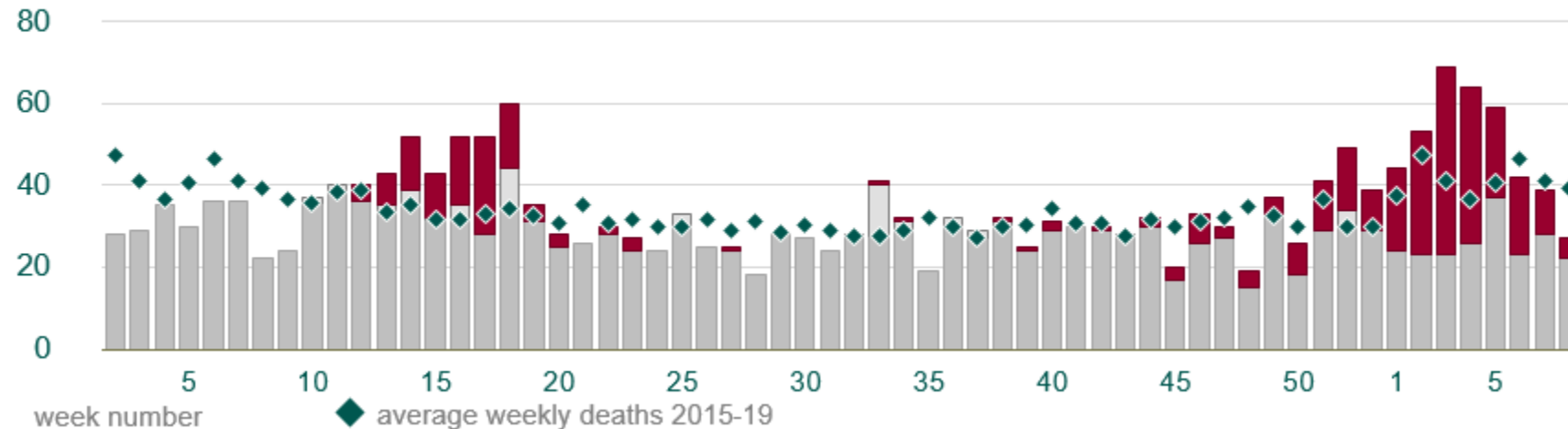
Data is from <https://coronavirus.data.gov.uk/>, data as of 11.03.21

# 2.1 Deaths – registered C-19 deaths vs weekly average

- There have been 6 deaths within 28 days of a positive Covid-19 test within the last 7 days in Portsmouth (Data up to 10.03.21. Available from: <https://coronavirus.data.gov.uk/>, accessed 11.03.21).
- The total number of deaths each week in Portsmouth was higher than in an average week for 5 weeks from the late March to early May 2020. These excess deaths were mostly Covid-19 related.
- Since week ending 15<sup>th</sup> May 2020, deaths have been below the weekly average in previous years. However, from week 34 (up to 21<sup>st</sup> August 2020) deaths were broadly in line with what has been seen in an average week over the previous five years.
- From week 51 (up to 18<sup>th</sup> December 2020) to week 5 (up to 5<sup>th</sup> February 2021) the total number of deaths in Portsmouth was higher than in an average week. These excess deaths were mostly Covid-19 related. However, for the last three weeks the number of deaths in Portsmouth has been lower than in an average week.

## Week 8 2021: Portsmouth, death occurrences

### All deaths up to 26 February 2021



Source: <https://www.ons.gov.uk/peoplepopulationandcommunity/healthandsocialcare/causesofdeath/datasets/deathregistrationsandoccurrencesbylocalauthorityandhealthboard>

The chart shows the weekly provisional figures on deaths occurring, minus the weekly average occurrence 2015 to 2019, with the proportion where Covid-19 was mentioned on the death certificate (week 8 – up to 26 February 2021).

The number of deaths where COVID-19 was not mentioned on the death certificate are shown in pale grey.

The number of deaths where COVID-19 was mentioned on the death certificate are overlaid in red.

The total number of deaths is shown by the total height of the bar.

The average number of deaths for the corresponding week of the relevant years are displayed as a green diamond.